

MEDICA

Results Within Reach Since 1983

EasyLyte[®]

Na⁺/K⁺

Na⁺/K⁺/Cl⁻

Na⁺/K⁺/Li⁺

Na⁺/K⁺/Ca⁺⁺/pH

Na⁺/K⁺/Cl⁻/Ca⁺⁺

Na⁺/K⁺/Cl⁻/Li⁺



excelab.mx

EasyLyte[®]

easy inside and out

- **Easy to Use**

- Simple, menu-driven, Yes/No prompted operation
- Whole blood, serum, plasma or urine samples
- Results printed automatically in less than 60 seconds
- Automatic or on-demand calibration
- Automatic probe wiping

- **Easy to Maintain**

- All calibrants contained in convenient, disposable solutions pack
- All waste collected in solutions pack
- Disposable electrodes require no maintenance
- Modular design makes maintaining analyzer simple and fast

- **Easy to Afford**

- Low analyzer purchase price
- Low cost per test

- **Available in five models:**

- **EasyLyte** Na⁺/K⁺
- **EasyLytePLUS** Na⁺/K⁺/Cl⁻
- **EasyLyteLithium** Na⁺/K⁺/Li⁺
- **EasyLyteCalcium** Na⁺/K⁺/Ca⁺⁺/pH
- **EasyLyteExpand** Na⁺/K⁺/Cl⁻/Ca⁺⁺ or Li⁺





EasyLyte

EasyLyte®

Einmaliges Produkt
für die collection
Collection of substances
Collection of substances
Collection of substances
Collection of substances
CE 040 100

MEDICA

Modular, maintenance-free electrodes



Pressing Yes or No buttons is all that is required to analyze serum, plasma or whole blood



Self-contained Solutions Pack contains liquid calibrants and collects all waste, eliminates sample contact



Cl⁻



Internal printer prints patient results, calibration values, quality control data, and results summaries, flagging abnormal results

K⁺



Capillary sampler is removable and disposable



EasySampler

The modular EasySampler connects quickly to EasyLyte analyzers, enhancing laboratory performance.

- 21 sample positions
- Dedicated Stat position
- Normal/Abnormal QC positions
- Optional auto-repeat of out-of-range values

Li+

pH

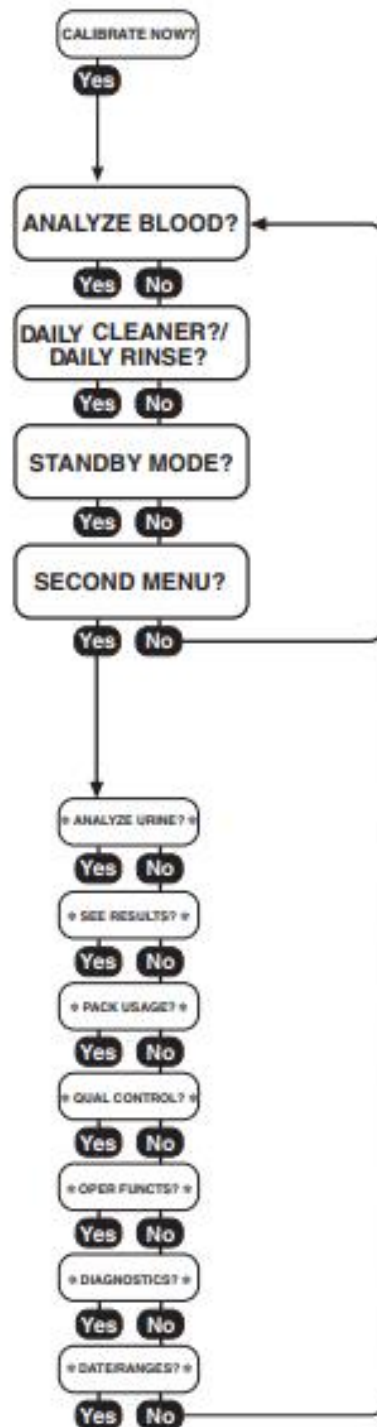
Analyzer software insures ease of operation

Software computes quality control statistics, flags abnormal results, and monitors performance.

- Two button operation
- Automatic calibration
- User-friendly menu

Ca⁺⁺

Na⁺



Specifications

(Na⁺/K⁺, Na⁺/K⁺/Cl⁻, Na⁺/K⁺/Li⁺, Na⁺/K⁺/Ca⁺⁺/pH, Na⁺/K⁺/Cl⁻/Ca⁺⁺, Na⁺/K⁺/Cl⁻/Li⁺)

MEDICA

Medica Corporation
5 Oak Park Drive
Bedford, MA 01730-1413
USA

CLIA Classification: Moderate Complexity
Sample Type: Whole Blood, Serum, Plasma or Urine
Sample Size: 100 µL Whole Blood, Serum, Plasma, 60 µL capillary or 400 µL diluted (1:10) Urine
Method: Direct measurement by Ion Selective Electrode (ISE)

USA 800 777 5983

Global +1 781 275 4892

Fax 781 275 2731

medicacorp.com

Measurement Range:

	Blood	Urine
Na ⁺ :	20 – 200 mmol/L	Na ⁺ : 25 – 1000 mmol/L
K ⁺ :	0.2 – 40 mmol/L	K ⁺ : 1.0 – 500 mmol/L
Cl ⁻ :	25 – 200 mmol/L	Cl ⁻ : 25 – 500 mmol/L
Li ⁺ :	0.2 – 5.0 mmol/L	
Ca ⁺⁺ :	0.1 – 6.0 mmol/L	
pH:	6.0 – 8.0 Units	

Display Resolution: Na⁺: 0.1 mmol/L K⁺: 0.01 mmol/L Cl⁻: 0.1 mmol/L
Li⁺: 0.01 mmol/L Ca⁺⁺: 0.01 mmol/L pH: 0.005 units

	Na ⁺ /K ⁺	Na ⁺ /K ⁺ /Cl ⁻	Na ⁺ /K ⁺ /Li ⁺	Na ⁺ /K ⁺ /Ca ⁺⁺ /pH	Na ⁺ /K ⁺ /Cl ⁻ /Ca ⁺⁺	Na ⁺ /K ⁺ /Cl ⁻ /Li ⁺
Analysis time (blood)	55 sec	55 sec	55 sec	60 sec	60 sec	60 sec
Urine Mode	Yes	Yes	Yes**	No	Yes*	Yes**
Analysis time (urine)	90 sec	90 sec	90 sec	N/A	90 sec	90 sec
Vet Mode	Yes	Yes	No	No	No	No
EasySampler	Yes	Yes	Yes	Yes	Yes	Yes
Capillary Samples	Yes	Yes	Yes	No	No	No
Bar Code Reader (Sample ID)	No	Yes	Yes	Yes	Yes	Yes

Data Storage: Patient results — up to 128 samples
QC results — up to 20 each Normal, Low, and High

Calibration: Automatic or On-Demand

Output: 128 x 64 pixel graphic display
24 column thermal printer
Serial port (RS-232), EasySampler port
Serial Y cable, connects barcode reader / PC

Ambient Conditions: 15–32°C (60–90°F), <85% humidity

Power: 100-240 VAC 50/60 Hz, 0.8A

Size & Weight: 9.5"W x 16.5"H x 8.0"D (24 cm W x 42 cm H x 20 cm D) 13 lbs. (5.8 kg)

* Calcium Results Not Reported
** Lithium Results Not Reported