

A Partner for Life  
Auto-Chemistry Analyzer

# REAGENT

## Hepatic Panel

Alanine Aminotransferase	ALT
Aspartate Aminotransferase	AST
Alkaline Phosphatase	ALP
γ-Glutamyl transferase	GGT
Cholinesterase	CHE
Total Bilirubin DSA Method	TB
Total Bilirubin VOX Method	TB-V
Direct Bilirubin DSA Method	DB
Direct Bilirubin VOX Method	DB-V
Bile Acids	TBA
Total Protein	TP
Albumin	ALB
Glutamate Dehydrogenase	GLDH
Iso-Citrate Dehydrogenase	ICDH
Leucine Aminopeptidase	LAP
Adenosine Deaminase	ADA
Prealbumin	PA
5'-Nucleotidase	5'-NT

## Renal Panel

Urea	BUN
Uric Acid	UA
Creatinine Enzyme Method	CRE-E
Cystatin C	CYS-C
MicroAlbumin	MALB
β2-Microglobulin	β2-MG
N-Acetyl-D-Glucosaminidase	NAG
Total Protein In Urine	TPU
Retinol-Binding protein	RBP
α1-Microglobulin	α1-MG

## Immune Panel

Immunoglobulin A	IgA
Immunoglobulin G	IgG
Immunoglobulin M	IgM
Complement C3	C3
Complement C4	C4

## Pancreatitis Panel

Amylase	AMY
Pancreatic Amylase	P-AMY
Lipase	LPS

## Cardiac Panel

Creatinine Kinase	CK
Creatinine Kinase MB Isoenzyme	CK-MB
Lactate Dehydrogenase	LDH
α-Hydroxybutyric dehydrogenase	HBDB
Homocysteine	HCY
Cardiac Troponin I	cTnI
Myoglobin Inorganic & Anemia	MB

## Inorganic & Anemia

Calcium Arsenazo III Method	Ca-ARS
Calcium O-Cresolphthalein Complexone	Ca-CPC
Chloride	CL
Magnesium	Mg
Inorganic Phosphorus	PHOS
Carbon Dioxide	CO2
Zinc	ZN
Iron	Fe
Total Iron-Binding Capacity	TIBC
Transferrin	TRF
Ferritin	FER

## Lipid Panel

Cholesterol	TC
Triglycerides	TG
High Density Lipoprotein-Cholesterol	HDL-C
Low Density Lipoprotein-Cholesterol	LDL-C
Apolipoprotein A1	APOA1
Apolipoprotein B	APOB
Lipoprotein (a)	LP (a)

## Rheumatism Panel

Anti Streptolysin O	ASO
Rheumatoid Factor	RF
C-Reactive Protein	CRP

## Diabetes Panel

Glucose Oxidase Method	GLU-OX
Glucose Hexokinase Method	GLU-HK
Glycohemoglobin A1C	HbA1c
Fructosamine	FMN

# CS-T180<sup>NEW</sup>

Auto-Chemistry Analyzer



## Overall performance

Equipment type	Fully automatic, discrete, STAT priority
Analysis Throughput	180T/h (single/double reagent) 540T/h combined with ISE
Test principle	Colorimetry, turbidimetry
Analysis method	End-point, kinetics, fixed-time, etc.

## Sample reagent unit

Sample reagent position	Up to 80 positions
Sample cuvettes specification	Standard cup, original blood tube, multi-specification tube available (Φ10~13)mm×(75~100)mm
Sample reagent probe	Liquid level detection and collision detection

## Reaction unit

Reaction cuvette	56 positions optical plastic cup
Total volume of reaction liquid	100μl ~ 360μl
Reaction temperature	37°C
Reaction disk constant temperature	Air bath
Mixer	Mix immediately after adding reagent
Wastewater treatment	With the function of concentrated waste liquid level alarming

## Optical system

Light source	20W/12V halogen lamps.
Monochromator	Grating photometry

Photoelectron road	After spectrophotometry
Wavelengths	340nm~800nm
Detector	Photodiode LED array

## Calibration and QC

Calibration method	1 point linear method, 2 point linear method, multiple point linear method, non-linear method
Calibration tracking	Automatic description calibration K-value trends
QC method	Real-time QC, daily QC and monthly QC
Out of control processing	Alarming for out of control sample, record lost control reason

## Operating system

PC operating system	Windows 7 or Windows 10
Analysis control software	Graphical operating software english version
Report printing	Report formats support the user-defined mode, QC and state information etc.
System connection	TCP/IP network connection, standard RJ-45

## Others

Volume	744mm×703mm×530mm
Weight	100kg
Power supply	Voltage AC 100V-240V, 50/60Hz, power 600VA

SMALL AND SMART

# CS-T180<sup>NEW</sup>

Auto-Chemistry Analyzer



DIRUI INDUSTRIAL CO.,LTD.

3333 Yiju Street, New&High Tech. Development Zone Changchun, Jilin 130103, P.R.China  
Tel: +86(431)81935331 85100409 Fax: +86(431)85172581 85083741  
E-mail: dirui@dirui.com.cn Http://www.dirui.com.cn

·Specifications subject to change without notice.  
20180412

DIRUI



DIRUI



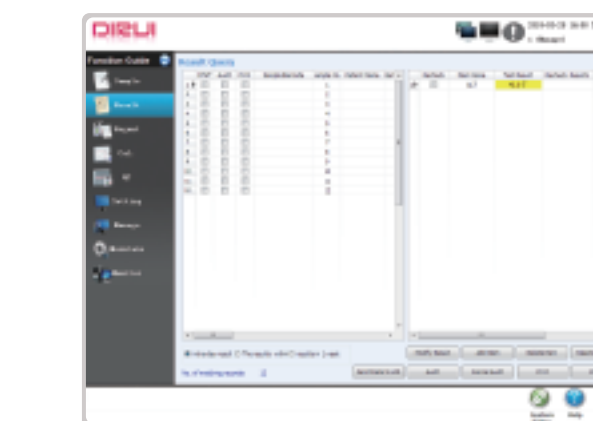
DIRUI

A Partner for Life  
Auto-Chemistry Analyzer

## SOFTWARE

**DIRUI provides friendly software interface and easy-to-use for all staffs.**

The result interface supports research results in real time, provides reaction analysis, and print result or transmit to LIS (Laboratory Information System). DIRUI refers to Westgard's rules, and generates QC chart and QC statistics for reliable patients' results. The monitor interface displays full sample test status real-time.



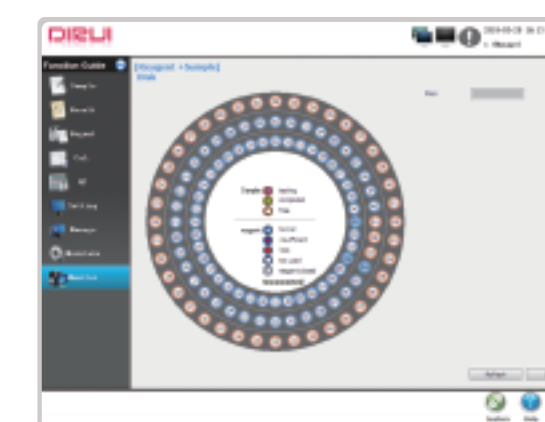
Search result easily by different conditions  
check the real time reaction process  
Print results and transmit result to LIS



Detect Reagent remain volume  
Automatically calculates the remain times.  
Online reagent refilling function



The Quality Control generates QC chart  
QC statistics and make it easy to identify QC errors.



Display full patient demographics.  
View the sample reaction status in real time.

### HIGH CAPACITY FLEXIBILITY

- High reagent and sample capacity (80 positions) flexibility
- Any position can be loaded sample or reagent
- All of reagents and samples could be read by barcode reader

### THE ON-BOARD HEMOLYSIS FUNCTION

- Whole blood testing function for HbA1c to avoid artificial error
- Not necessary for centrifugation
- Automatically hemolysis function, easy operation and standardization for HbA1c test

### ACCURATE RESULT

- 340-800nm 12 wavelengths
- Digital liquid level detection high sensitivity avoids bubbles' interference
- Reagent inventory management, automatically calculate remaining volume and remaining number

### EXCELLENT PERFORMANCE

- Automatically cuvette checkup ensure the cuvette clean
- Collision Protection
- Water quality checkup
- RJ-45 Network communication

### THE QUALITY CONTROL

- Daily QC, Monthly QC & QC chart
- Visual QC assessment
- QC history checking
- QC error analysis

### SAVE COST SAVE SPACE

- Low water consumption
- Minimum reaction volume 100μl
- Minimum maintenance
- Small size, easy to place in narrow space